



Stainless Steel Sinks & Accessories

20C33B

Address : 5171 Steeles Ave West, Toronto M2N 3G7

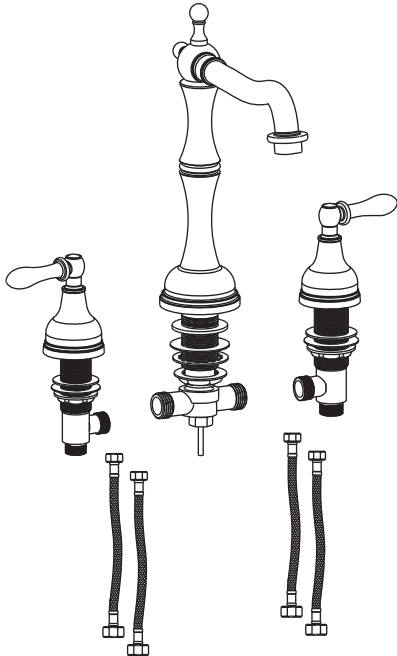
Installation Instruction

Kitchen Faucet



Before Your Installation

Check to make sure you have the following parts indicated below:



Tools You Will Need



Phillips screwdriver



Adjustable wrench



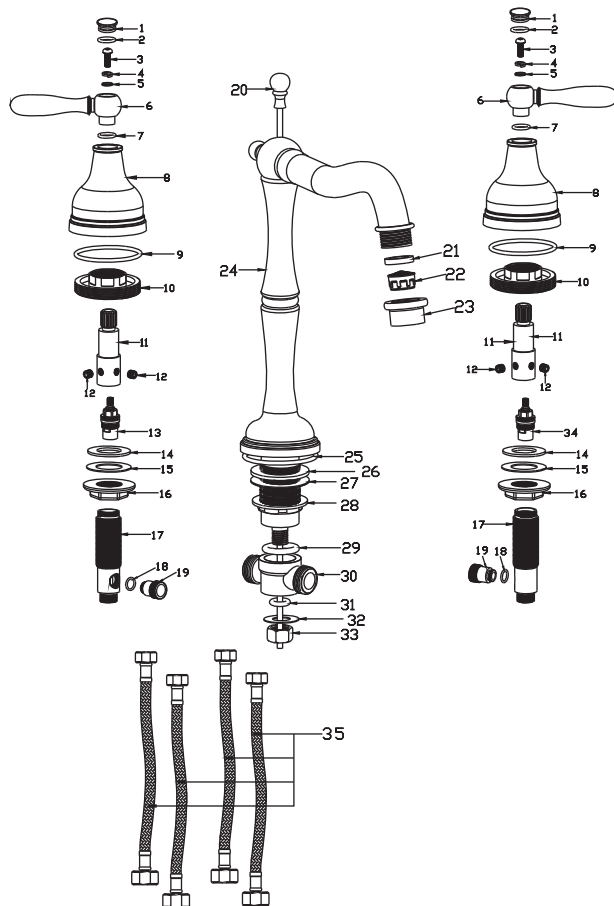
Hexagon wrench
(Supplied)



Spanner for aerator
(Supplied)

Replacement Parts

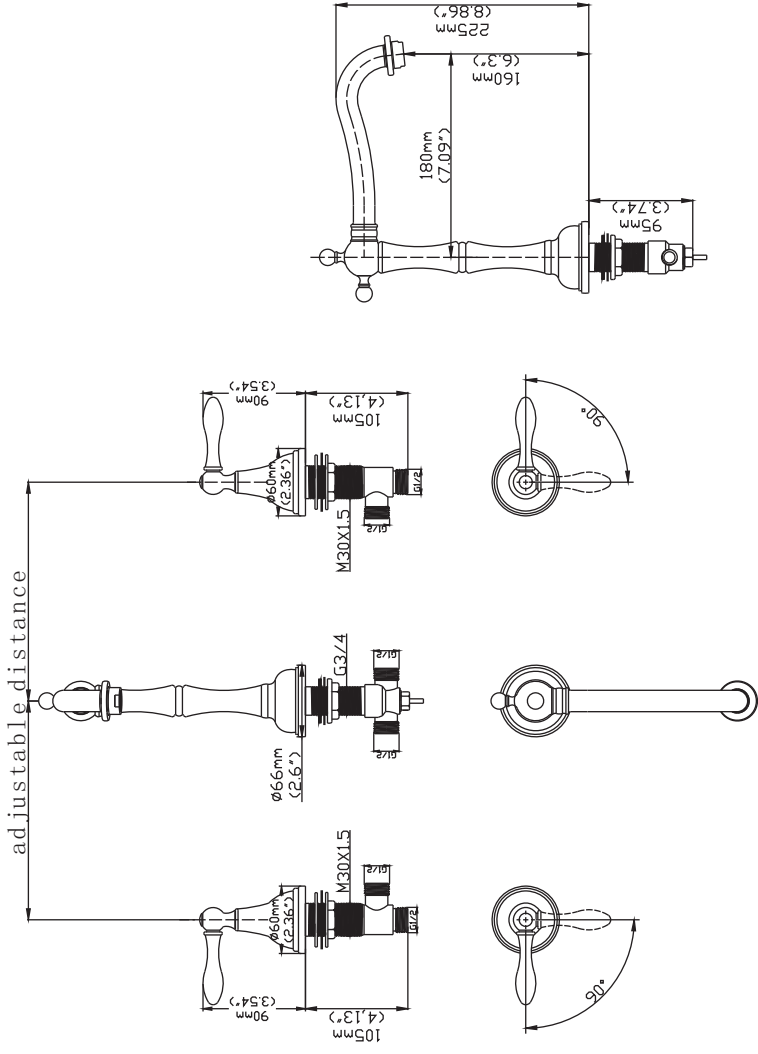
Keep this manual for ordering replacement parts.



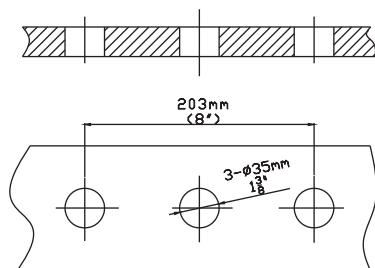
NO NAME

1. Cover cap
2. O-ring
3. Screw
4. Underlay
5. Underlay
6. Handle
7. O-ring
8. Handle body
9. O-ring
10. Table holder
11. Extended bar
12. Screw
13. Cartridge
14. Rubber gasket
15. Skidproof underlay
16. Hexagon nut
17. Cartridge holder
18. O-ring
19. Connector
20. Rod
21. Gasket
22. Aerator
23. Aerator holder
24. Faucet body
25. O-ring
26. Rubber gasket
27. Skidproof underlay
28. Hexagon nut
29. O-ring
30. Tee connecto
31. O-ring
32. Washer
33. Lock nut
34. Cartridge
35. Hose

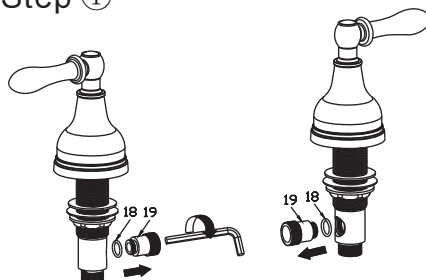
Product Dimension Drawing



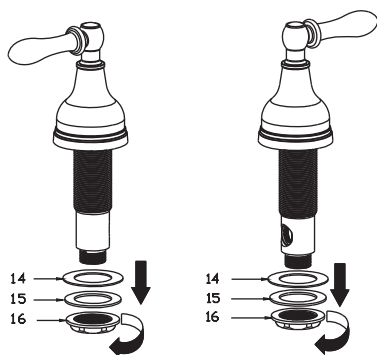
Faucet Installation Procedures



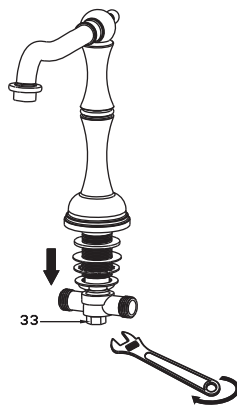
Step ①



Step ②



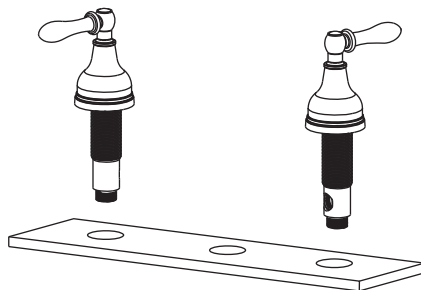
Step ③



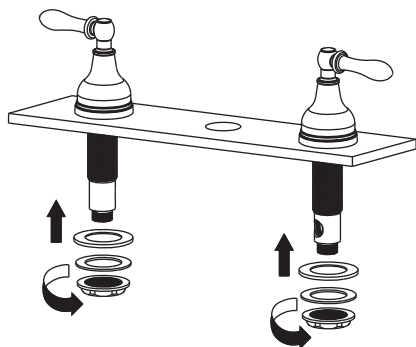
Step ④



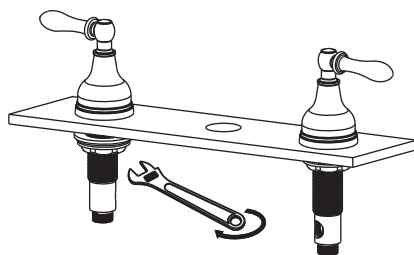
Step ⑤



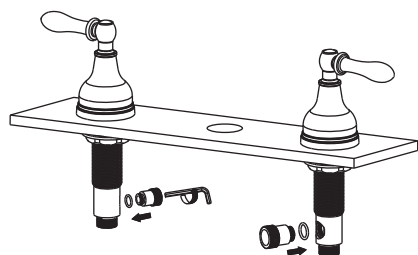
Step ⑥



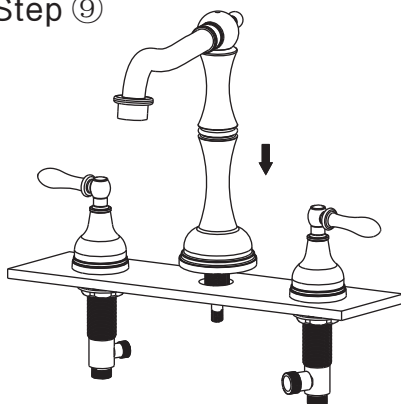
Step ⑦



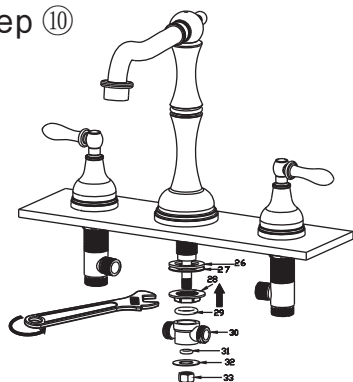
Step ⑧



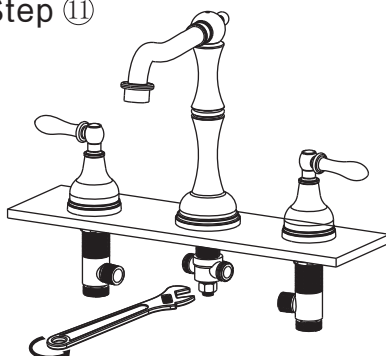
Step ⑨



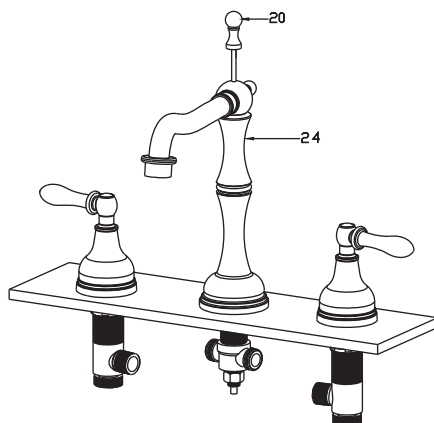
Step ⑩



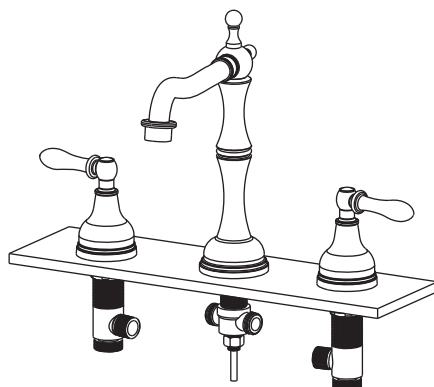
Step ⑪



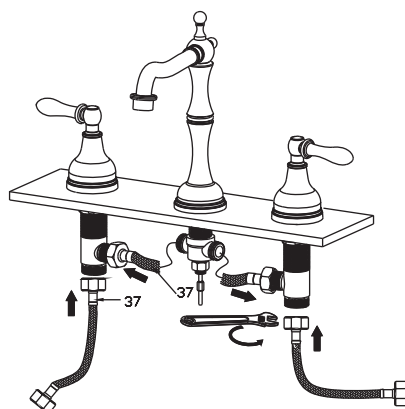
Step 12



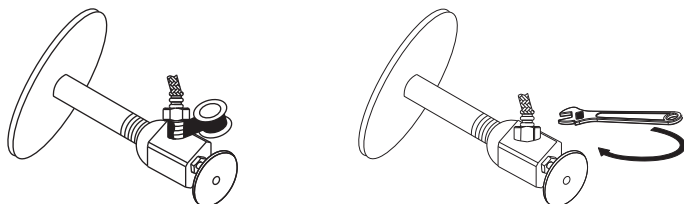
Step 13



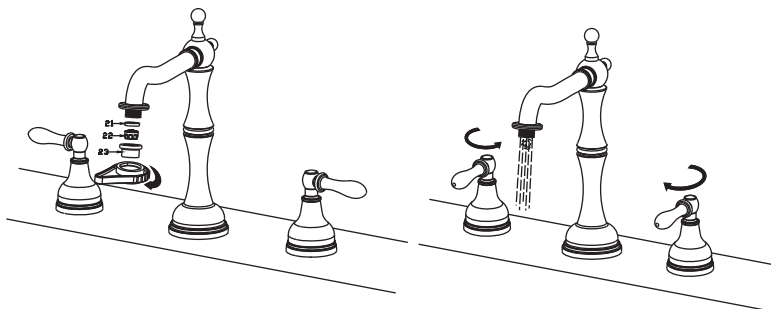
Step 14



Step 15



Step 16



Notice:

Please removing all of the sand, silt and other things from the water hose before assembling, to avoid blocking the faucet and effecting water rate. Please use the special tools to disassemble it and wash with pneumatic equipment, if the faucet blocked.

Step 17

